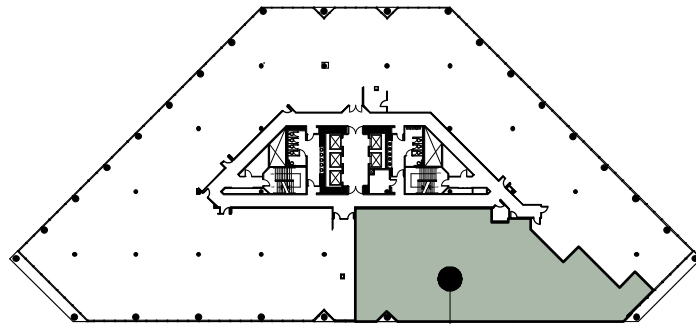
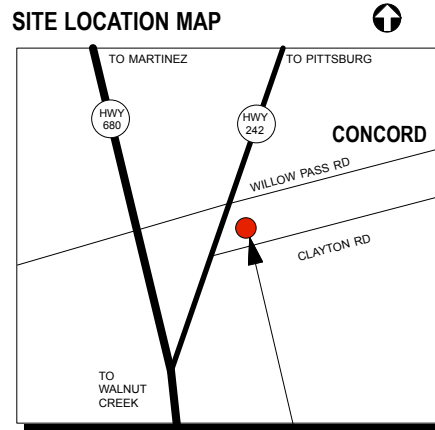


1855 - SIXTH FLOOR KEY PLAN

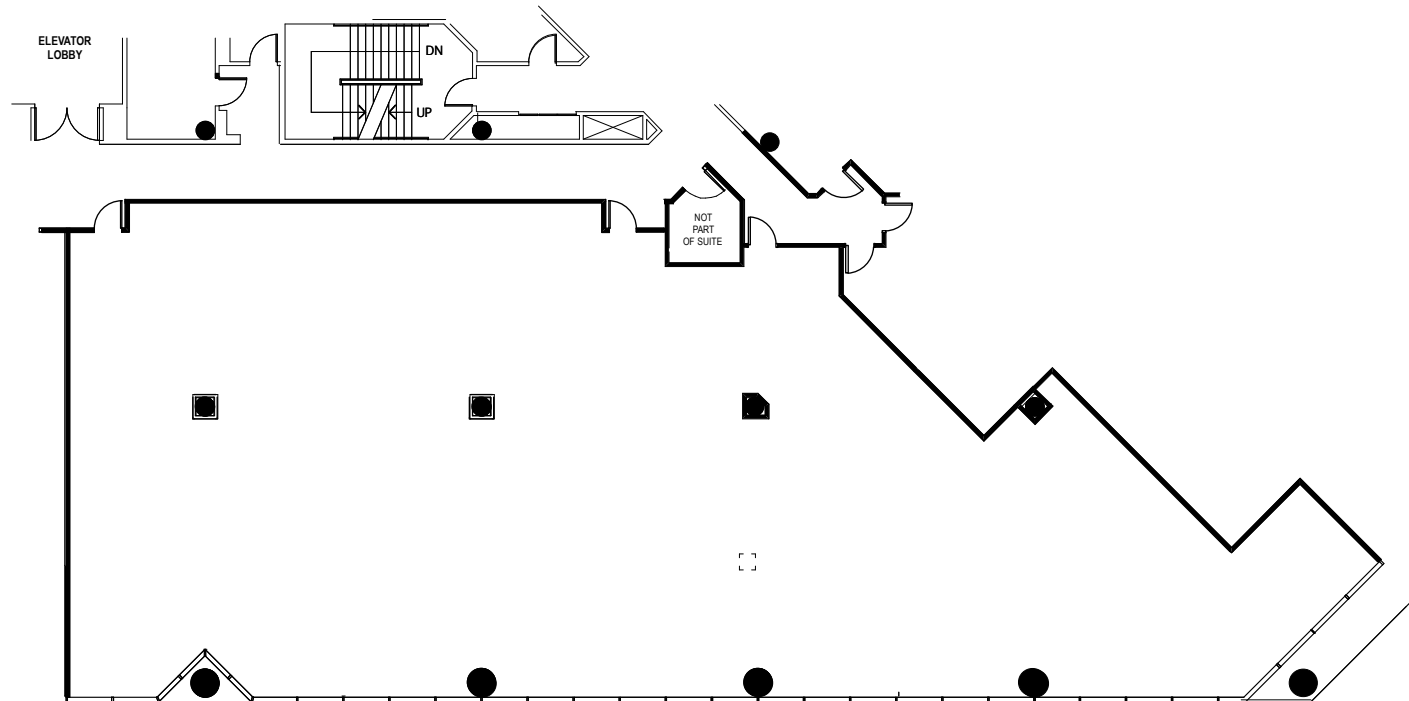


SUITE LOCATION

SITE LOCATION MAP



CONCORD
GATEWAY I&II
CONCORD, CA.



SUITE 680



Colliers International
1850 Mount Diablo Boulevard, Suite 200
Walnut Creek, CA 94596 | United States
www.colliers.com

LEASING AGENT

Scott Ellis
(925) 279-5575

scott.ellis@colliers.com

Matt Hurd
(925) 279-5567

matt.hurd@colliers.com

Eric Erickson
(925) 279-5580

eric.erickson@colliers.com

**Concord
Gateway II**

1855 Gateway Blvd.
Concord, CA 94520

Fifth Floor

Owned and Managed by

**Sierra Pacific
Properties, Inc.**

Approximate Area Calculations
Subject To Verification:

7,071 rsf

As-built Plan To Be Verified

This information displayed while not guaranteed has been secured by sources we believe to be reliable. This information is subject to errors & omissions. Any tenant should conduct their own investigation.

Plan Revision - 2-5-18