

FOR SALE >

±5.265 AC With Small Bldg, Partially Paved

2075 EAST LELAND ROAD, PITTSBURG, CA



Up to ±5.265 Acres

ZONED CS SERVICE COMMERCIAL

- ±1.44 Acres, partially paved, includes existing small building with restroom (APN: 088-152-032-4)
- ±2.025 Acres parcel (APN: 088-152-037-3)
- ±1.80 Acre parcel (APN: 088-152-036-5)
- Can be combined for a total of ±5.265 Acres
- Utilities to sites including city water, sewer, PG&E electricity and gas

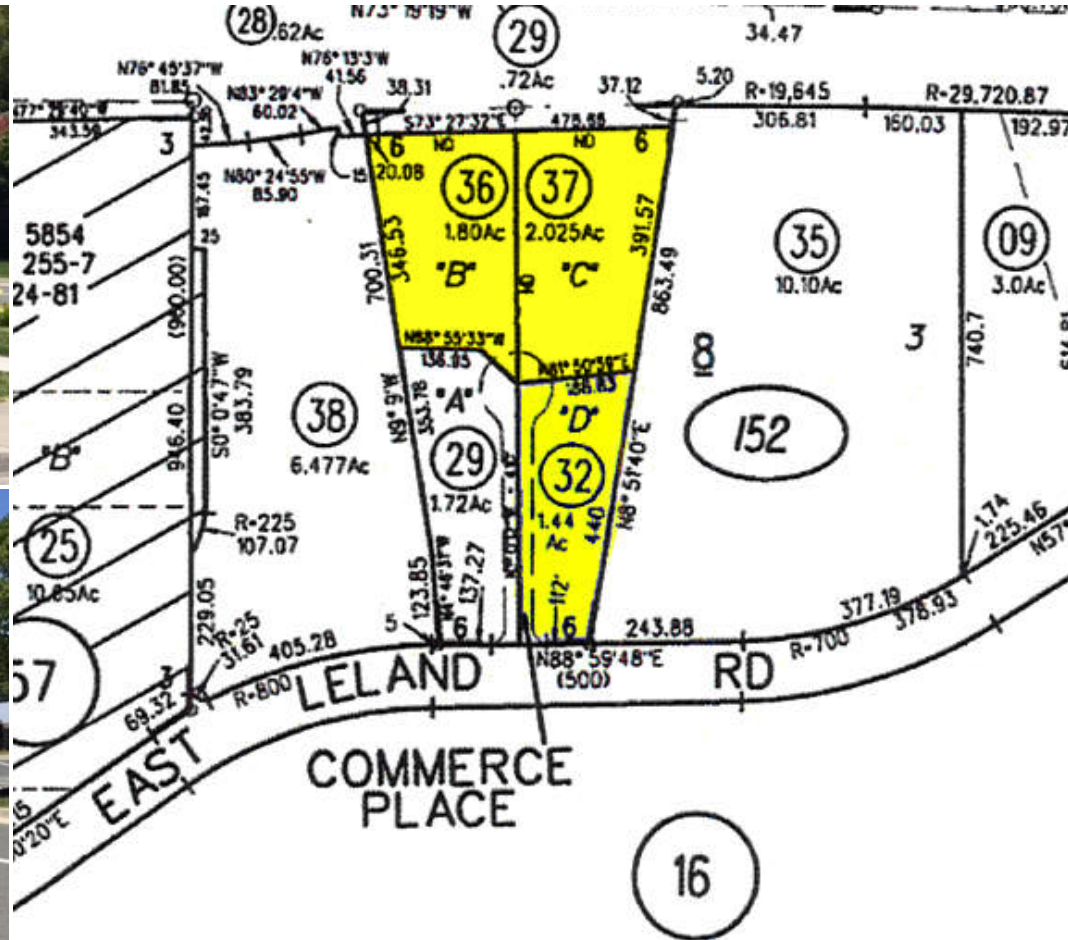
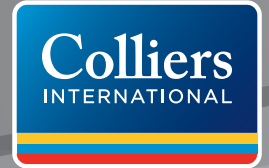
CURT D. SCHEVE SIOR
+1 925 279 5593
curt.scheve@colliers.com
Lic. 00916122

ERIC ERICKSON SIOR CCIM
+1 925 279 5580
eric.erickson@colliers.com
Lic. 01177336

FOR SALE >

±5.265 AC With Small Bldg, Partially Paved

2075 EAST LELAND ROAD, PITTSBURG, CA



CURT D. SCHEVE SIOR
+1 925 279 5593
curt.scheve@colliers.com
Lic. 00916122

ERIC ERICKSON SIOR CCIM
+1 925 279 5580
eric.erickson@colliers.com
Lic. 01177336

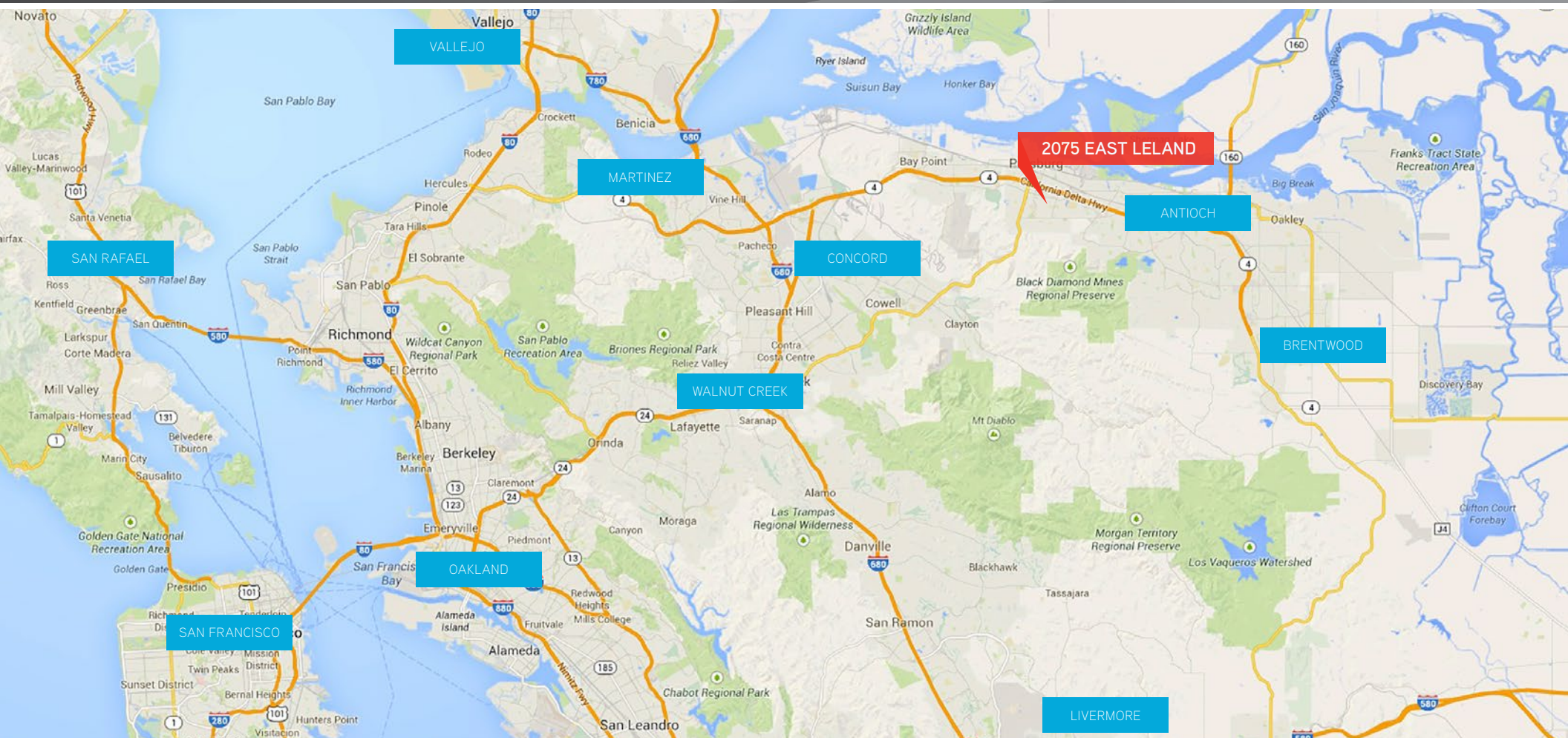
- Neighborhood uses include new "Bobcat" sales / rental dealership, multiple retail type businesses
- Small building includes restroom
- Prominent location with Highway 4 frontage

Colliers International
1850 Mt. Diablo Blvd., Suite 200
Walnut Creek, CA 94596
www.colliers.com/walnutcreek

FOR SALE >

±5.265 AC With Small Bldg, Partially Paved

2075 EAST LELAND ROAD, PITTSBURG, CA



CURT D. SCHEVE SIOR
+1 925 279 5593
curt.scheve@colliers.com
Lic. 00916122

ERIC ERICKSON SIOR CCIM
+1 925 279 5580
eric.erickson@colliers.com
Lic. 01177336

Colliers International
1850 Mt. Diablo Blvd., Suite 200
Walnut Creek, CA 94596
www.colliers.com/walnutcreek