

FOR LEASE > OFFICE SPACE NEXT TO CAL CAMPUS



# 2150 Kittredge Street

BERKELEY, CA



The information furnished has been obtained from sources we deem reliable and is submitted subject to errors, omissions and changes. Although Colliers International has no reason to doubt its accuracy, we do not guarantee it. All information should be verified by the recipient prior to lease, purchase, exchange, or execution of legal documents. © 2012 Colliers International

**AILEEN DOLBY**  
+1 510 433 5815  
aileen.dolby@colliers.com  
CA License No. 00949630

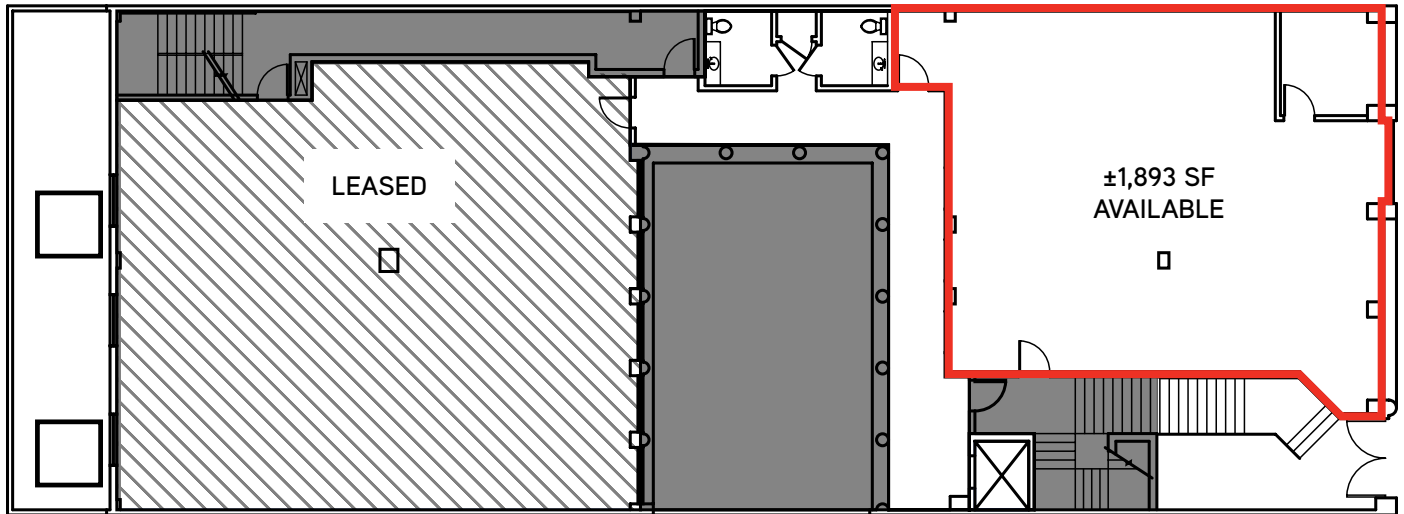
**COLLIERS INTERNATIONAL**  
1999 Harrison Street, Suite 1750  
Oakland, CA 94612  
[www.colliers.com/oakland](http://www.colliers.com/oakland)

FOR LEASE > OFFICE

# 2150 Kittredge Street

BERKELEY, CA

## SECOND FLOOR



## Property Features

- > 1,893 square feet of open office space
- > Operable windows and great natural light
- > New paint & carpet

**Lease Rate:** \$2.50 psf/month, Full Service

The information furnished has been obtained from sources we deem reliable and is submitted subject to errors, omissions and changes. Although Colliers International has no reason to doubt its accuracy, we do not guarantee it. All information should be verified by the recipient prior to lease, purchase, exchange, or execution of legal documents. © 2012 Colliers International

**AILEEN DOLBY**  
+1 510 433 5815  
aileen.dolby@colliers.com  
CA License No. 00949630



**COLLIERS INTERNATIONAL**  
1999 Harrison Street, Suite 1750  
Oakland, CA 94612  
[www.colliers.com/oakland](http://www.colliers.com/oakland)