



Prologis Oakland Global Logistics Center BUILDING 2

2000 Maritime Street | Oakland, CA

±116,415 Square Feet Available

STATE-OF-THE-ART WAREHOUSE BUILDING



CLICK TO VIEW
VIRTUAL TOUR

www.PrologisOGLC.com



Location

- ±253,000 cars a day on I-80
- Approximately 10 million people within a 90 minute delivery time
- Adjacent to Union Pacific and BNSF Rail
- Adjacent to the Port of Oakland
- Part of a larger 58 acre development
- No maritime use restrictions



ONE BLOCK TO THE
PORT OF OAKLAND



IMMEDIATE HIGHWAY ACCESS
TO I-80, I-580, & I-880



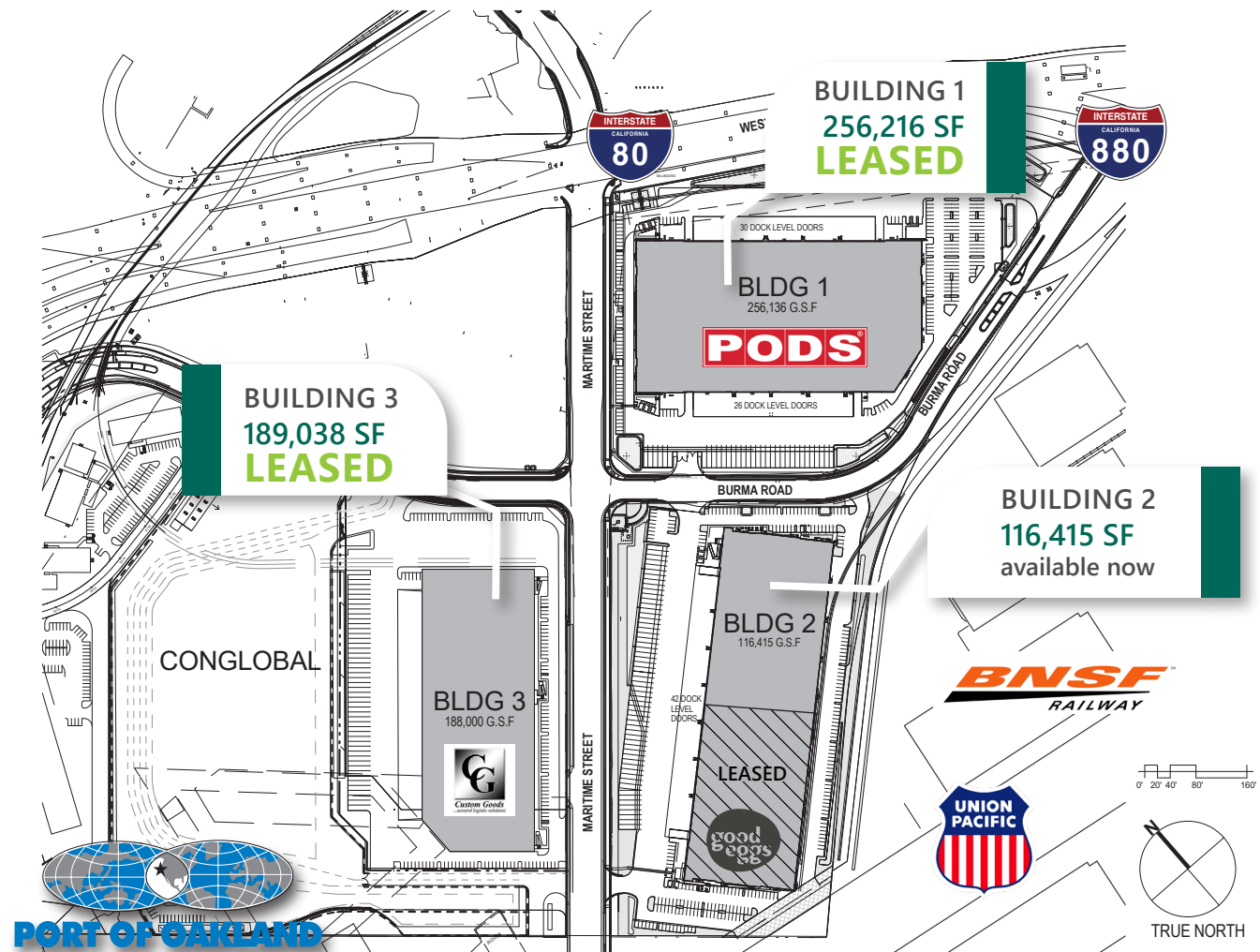
TWO AIRPORTS LOCATED
WITHIN 20 MILES



ADJACENT TO THE BNSF &
UNION PACIFIC MULTI-MODAL
TRANSPORTATION FACILITIES



8 MILES TO DOWNTOWN
SAN FRANCISCO



Centrally located in the Bay Area, this premier high throughput distribution facility offers the unprecedented opportunity to reach one of the wealthiest regions in the world with the ability to reach a population base of 10 million consumers within 90 minutes – **faster than any other logistics facility in the region.**

Oakland Global Logistics Center sits just one block from the fifth busiest container port in the United States. The Port of Oakland loads and discharges more than 99 percent of the containerized goods moving through Northern California.

Prologis Oakland Global Logistics Center

Building 2

Oakland, CA



Building

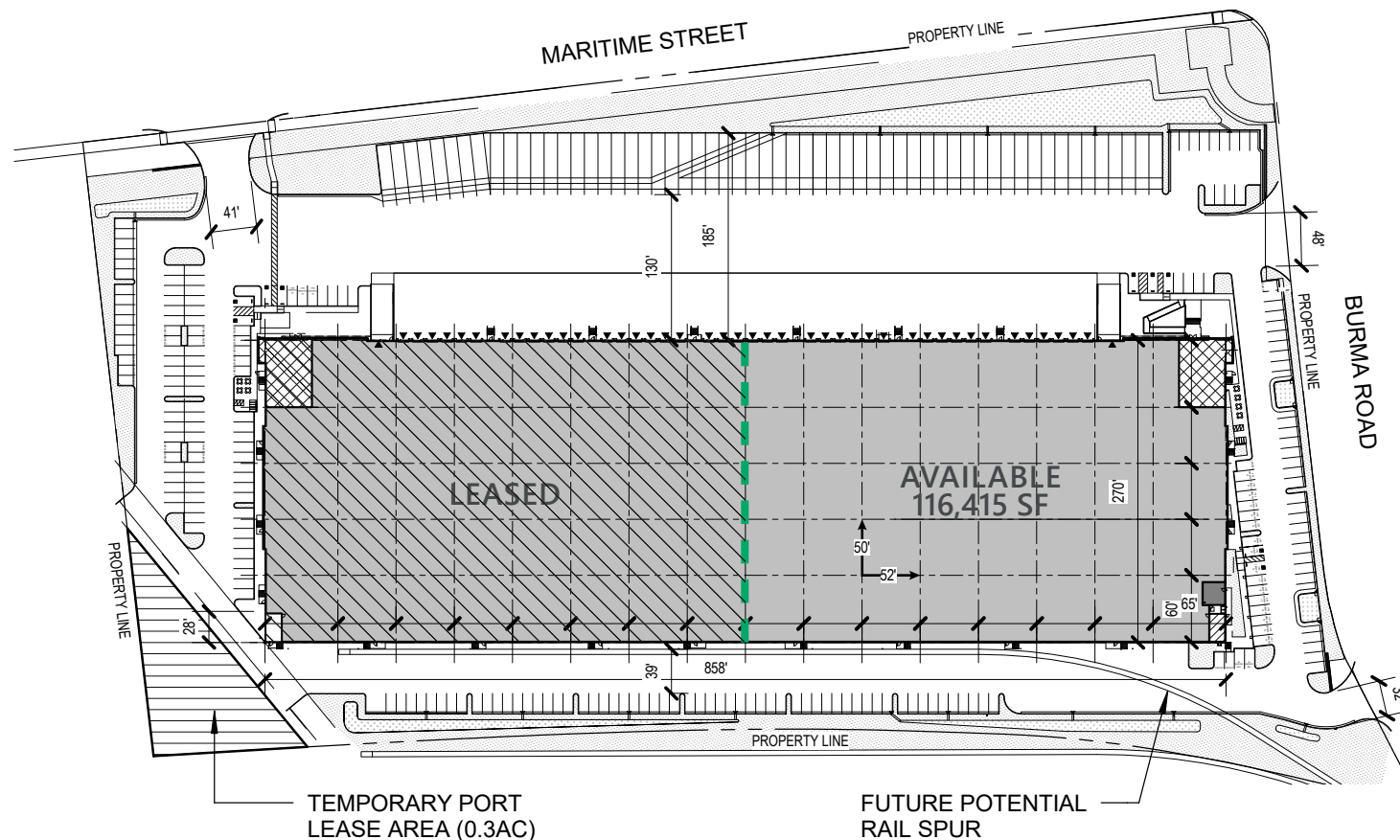
- ±116,415 SF State-of-the-Art Warehouse as part of a larger ±232,785 SF building
 - ±2,500 SF Office
 - Available Now
 - Situated on ±14 acres
 - ±32' clear height
- ESRF fire suppression system
 - Designed and built to LEED® standards
 - 1.33% skylights
 - 6" reinforced concrete floors
 - ±2,000 amps of 277/480v power
 - ±50' x 52' typical column spacing

Loading Area

- 21 dock high loading positions
- 1 grade level door

Parking

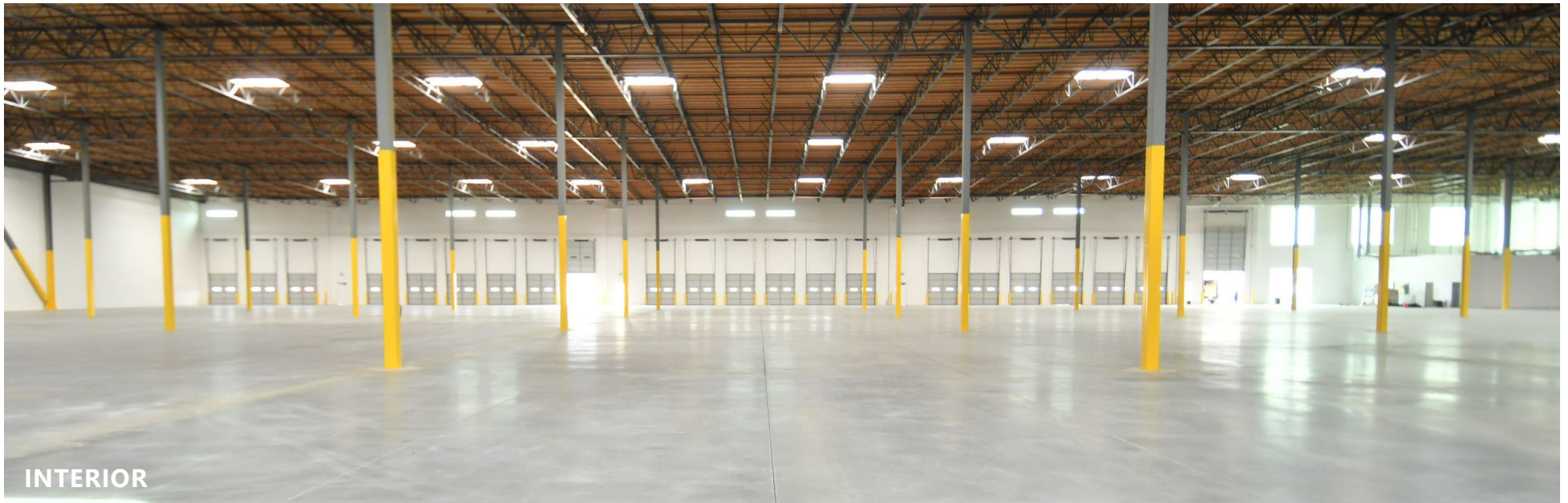
- 29 trailer parking positions
- Ample auto parking spaces



Prologis Oakland Global Logistics Center
Building 2
Oakland, CA



Prologis Oakland Global Logistics Center
Building 2
Oakland, CA





Corporate Headquarters
Pier 1, Bay 1
San Francisco, CA 94111, USA
Main: +1 415 394 9000
info@prologis.com

Prologis - Fremont
3353 Gateway Boulevard
Fremont, California 94538, USA
Main: +1 510 661 4000
N. America toll-free: +1 800 566 2706

www.prologis.com | NYSE: PLD
Twitter: @Prologis



PROLOGIS®