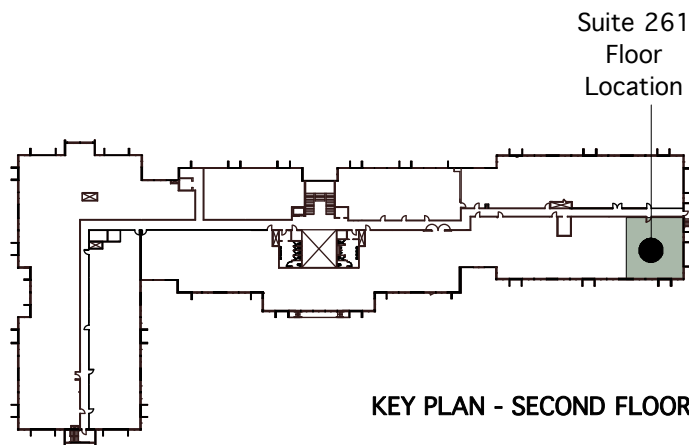


SUITE 261
1,705 rsf



KEY PLAN - SECOND FLOOR



Colliers International
1850 Mount Diablo Boulevard, Suite 200
Walnut Creek, CA 94596 | United States
www.colliers.com

LEASING AGENT

Jeffrey Weil
(925) 279-5590

jeff.weil@colliers.com

Matt Hurd
(925) 279-5567

matt.hurd@colliers.com

Willows Office Park

1355 Willow Way
Concord, CA 94520

Second Floor

Owned and Managed by

**Pacific Service
Credit Union**

Approximate Area Calculations
Subject To Verification:

1,705 rsf

As-built Plan To Be Verified

This information displayed while not guaranteed has been secured by sources we believe to be reliable. This information is subject to errors & omissions. Any tenant should conduct their own investigation.

Plan Revision - 8-2-21