



Colliers International  
1850 Mount Diablo Boulevard, Suite 200  
Walnut Creek, CA 94596 | United States  
[www.colliers.com](http://www.colliers.com)

LEASING AGENT

**Scott Ellis**  
(925) 279-5575

[scott.ellis@colliers.com](mailto:scott.ellis@colliers.com)

**Matt Hurd**  
(925) 279-5567

[matt.hurd@colliers.com](mailto:matt.hurd@colliers.com)

**Eric Erickson**  
(925) 279-5580

[eric.erickson@colliers.com](mailto:eric.erickson@colliers.com)

**Concord  
Gateway II**

1855 Gateway Blvd.  
Concord, CA 94520

Seventh Floor

Owned and Managed by

**Sierra Pacific  
Properties, Inc.**

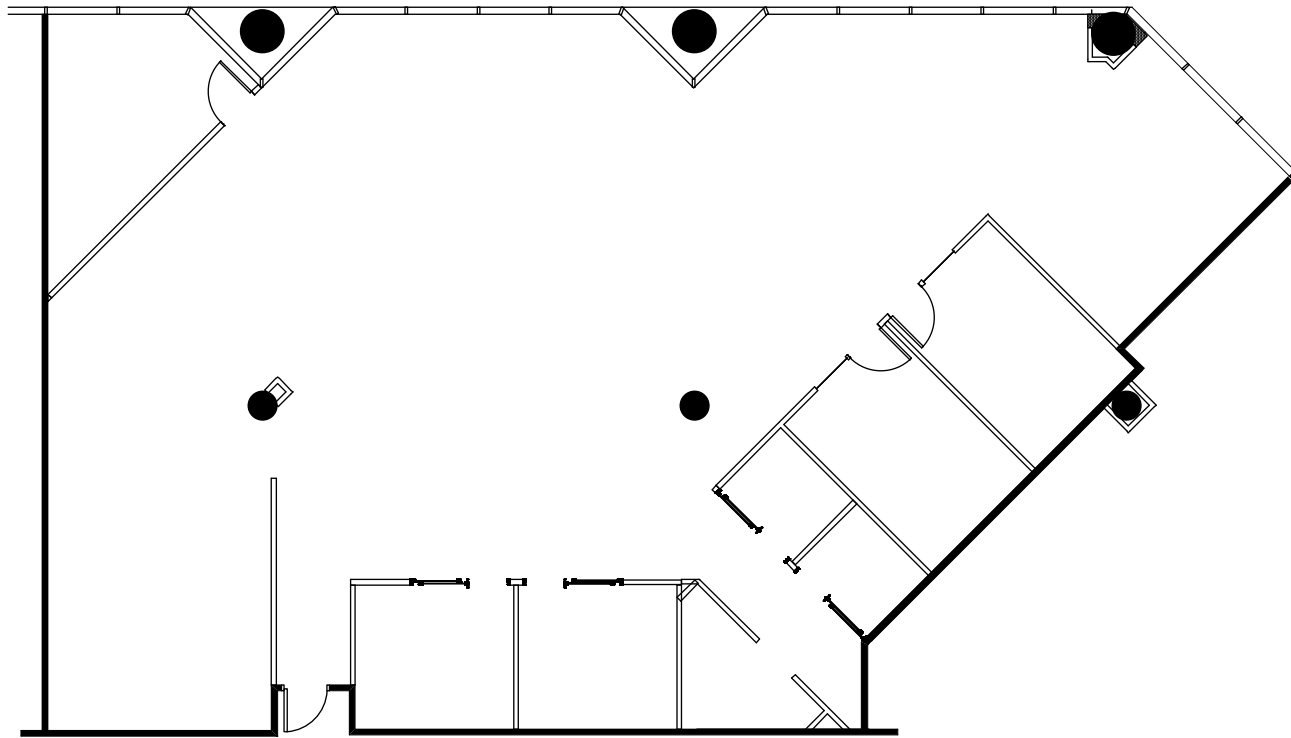
Approximate Area Calculations  
Subject To Verification:

4,204 rsf

As-built Plan To Be Verified

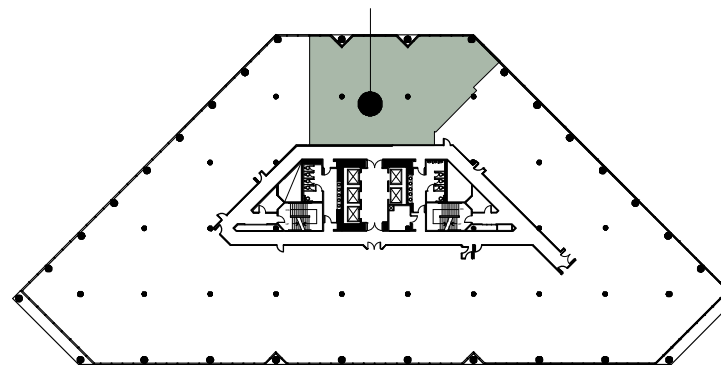
This information displayed while not guaranteed has  
been secured by sources we believe to be reliable.  
This information is subject to errors & omissions.  
Any tenant should conduct their own investigation.

Plan Revision - 1-22-21



**SUITE 740**

**SUITE FLOOR LOCATION**



**KEY PLAN - FLOOR 7**