

The Colliers logo, featuring the word "Colliers" in a serif font, with a horizontal bar below it consisting of three colored segments: blue, yellow, and red.A photograph of a modern, two-story office building with large windows and a flat roof. The building is surrounded by trees and landscaping. A sign in the foreground reads "140 Gregory Lane Envisage Companies". A street sign above the entrance reads "Gregory Lane".

For Lease Pleasant Hill Office Space

140 Gregory Lane, Pleasant Hill, CA

Copyright © 2023 Colliers
Information herein has been obtained from sources deemed reliable,
however its accuracy cannot be guaranteed. The user is required to
conduct their own due diligence and verification.

Eric Erickson SIOR CCIM
Senior Vice President
+1 925 279 5580
eric.erickson@colliers.com
CA Lic. 001177336

Brian Clack
Vice President
+1 925 279 5578
brian.clack@colliers.com
CA Lic. 01416362

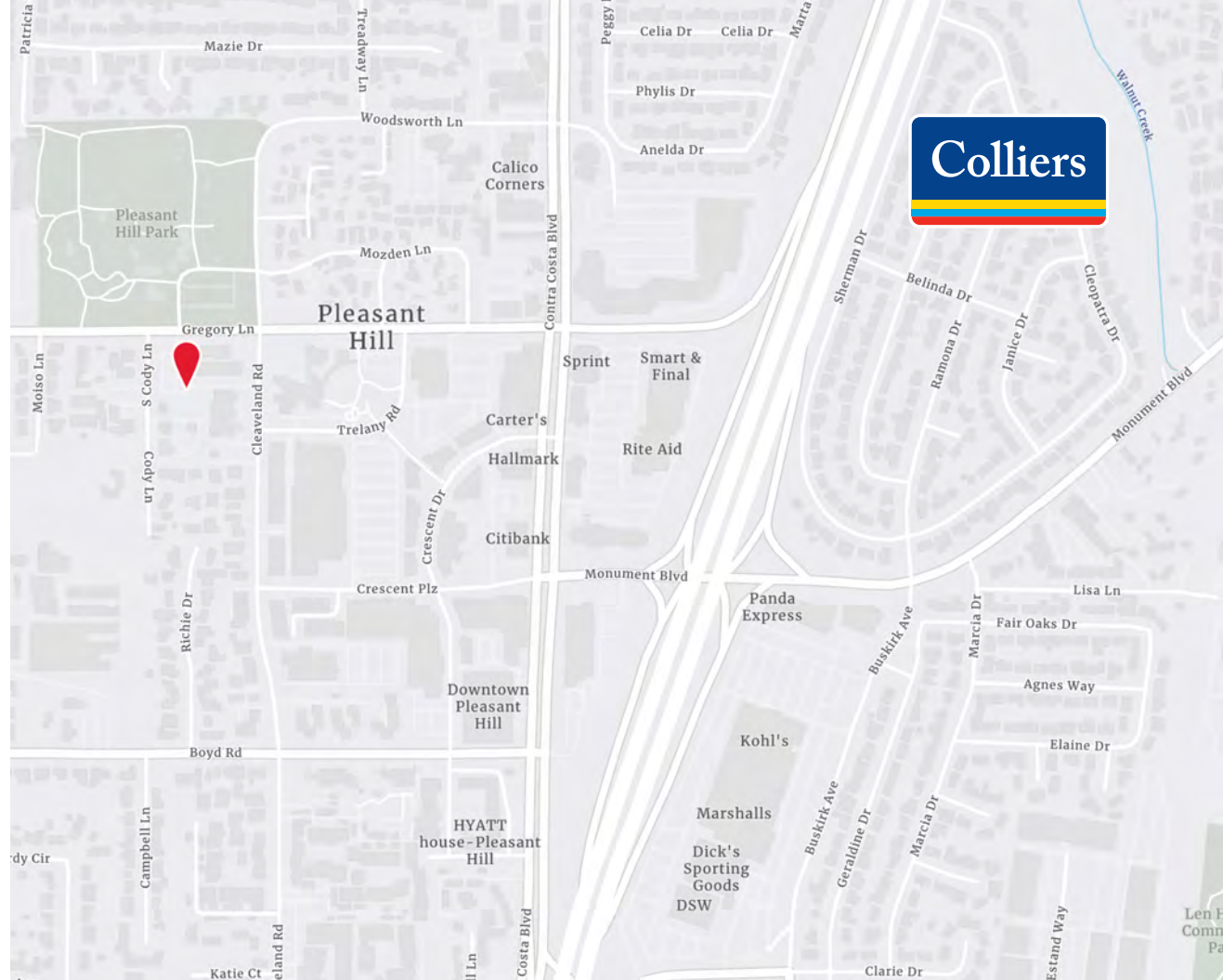
140 Gregory Lane, Pleasant Hill, CA

Highlights

- Located in the heart of Downtown Pleasant Hill
- Free on-site parking
- 3 minute walk to Crescent Drive
- Surrounded by retail and banking amenities
- 2 blocks off the freeway

Available Space

- Suite 100 ±1,916 RSF
- Suite 180 ±2,329 RSF



140 Gregory Lane, Pleasant Hill, CA

Photos



140 Gregory Lane, Pleasant Hill, CA

Location

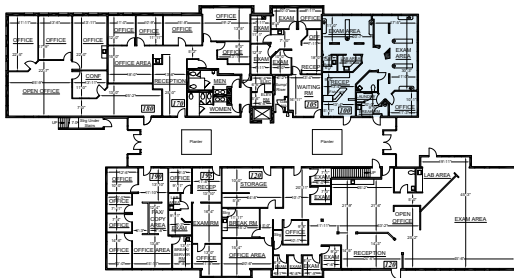


Suite 100

Colliers

±1,916 RSF

Available Now



Brian Clack

+1 925 279 4654

brian.clack@colliers.com

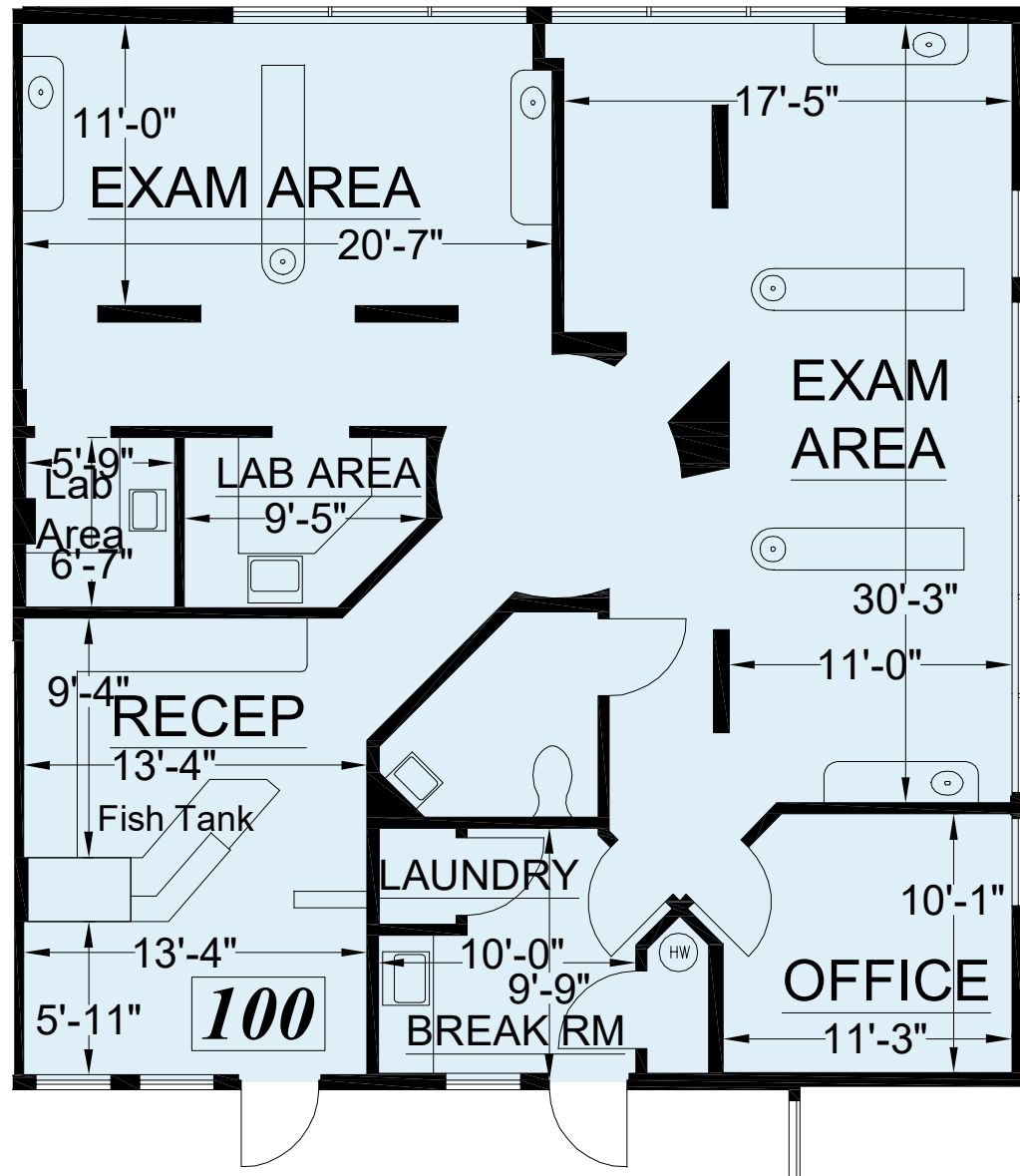
CA Lic. 01416362

Eric Erickson, SIOR CCIM

+1 925 279 5580

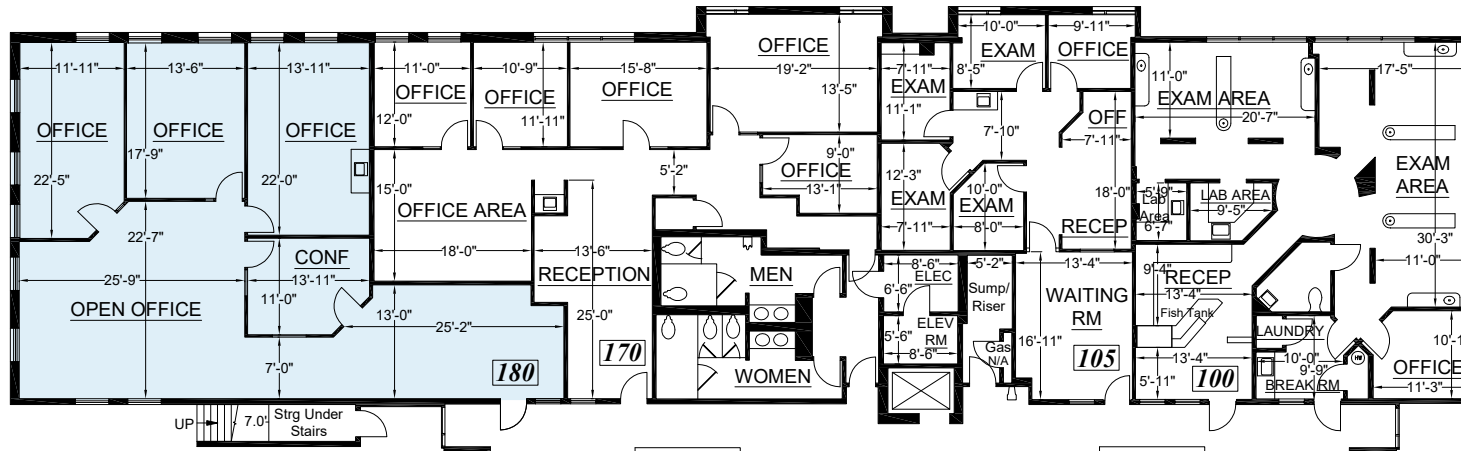
eric.erickson@colliers.com

CA Lic. 01177336



Suite 180

Colliers



SUITE 180 // ±2,329 SF

Brian Clack

+1 925 279 4654

brian.clack@colliers.com

CA Lic. 01416362

Eric Erickson, SIOR CCIM

+1 925 279 5580

eric.erickson@colliers.com

CA Lic. 01177336

