



Fenced office complex
with secured parking

Colliers

1450
Civic Court

 BAY CITIES

For Lease | Professional Office Space

Civic Executive Park

1450 Civic Court | Concord, CA

Contact Brokers

Brian Clack

Senior Vice President
CA License No. 01416362
brian.clack@colliers.com
Direct: +1 925 279 4654
Mobile: +1 415 407 7998

Eric Erickson, SIOR

Executive Vice President
CA License No. 01177336
eric.erickson@colliers.com
+1 925 279 5580

1450 Civic Court | Concord, CA

Overview

Highlights



Park-like setting with walkway benches, and mature landscaping



ADA complaint access with elevator



Close to retail amenities



Parking 4/1,000



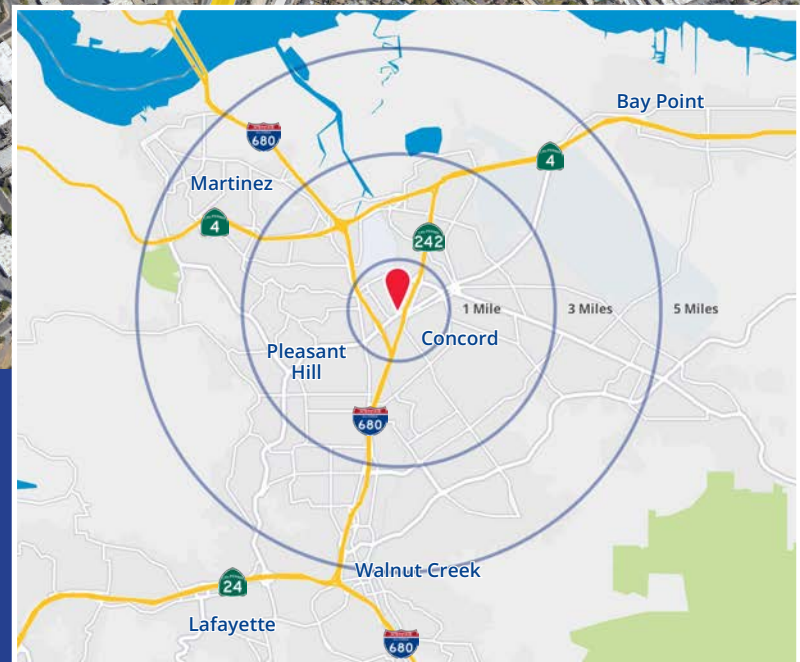
Easy access to Hwy 242 and I-680 on/off of Willow Pass Road



Available Spaces

Building	Suite	Rentable Square Feet
A	200	±3,973 RSF
C	100	±3,976 RSF

Location Overview



Contact Brokers

Brian Clack

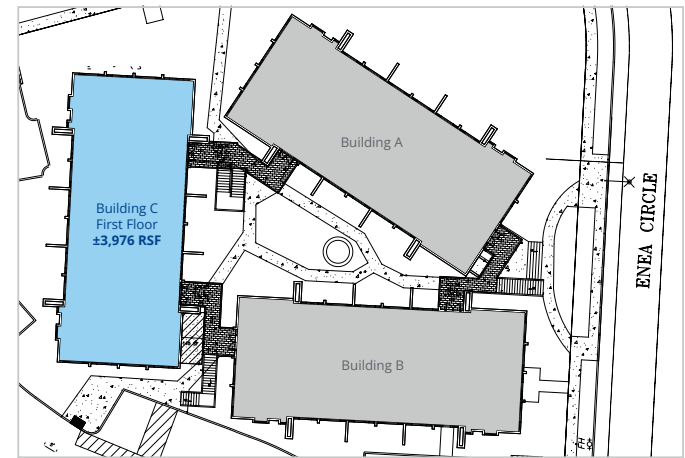
Senior Vice President
CA License No. 01416362
brian.clack@colliers.com
Direct: +1 925 279 4654
Mobile: +1 415 407 7998

Eric Erickson, SIOR

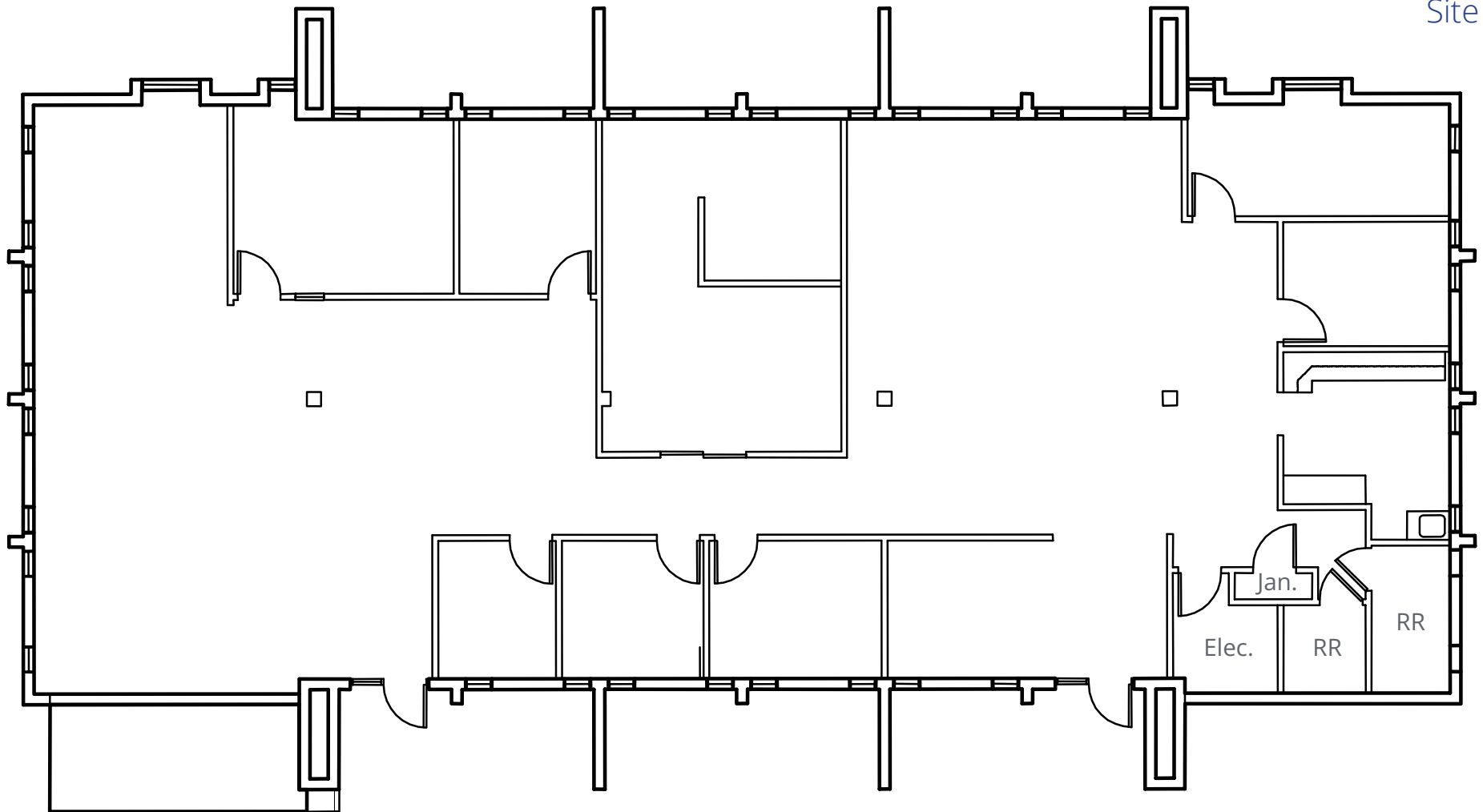
Executive Vice President
CA License No. 01177336
eric.erickson@colliers.com
+1 925 279 5580

1450 Civic Court, Bldg. C | Concord, CA

First Floor
±3,976 RSF

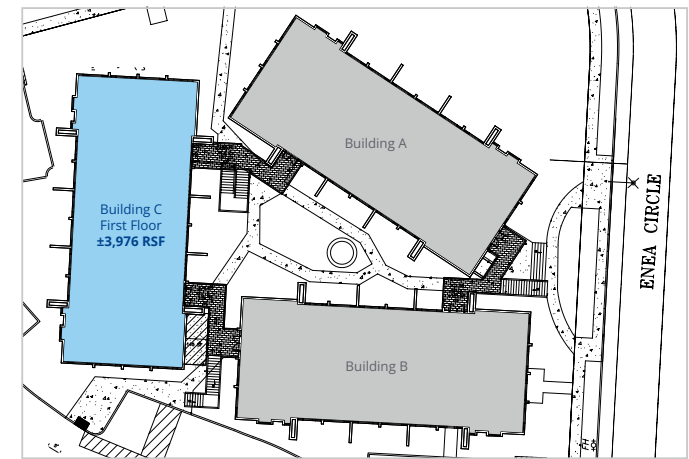


Site Plan

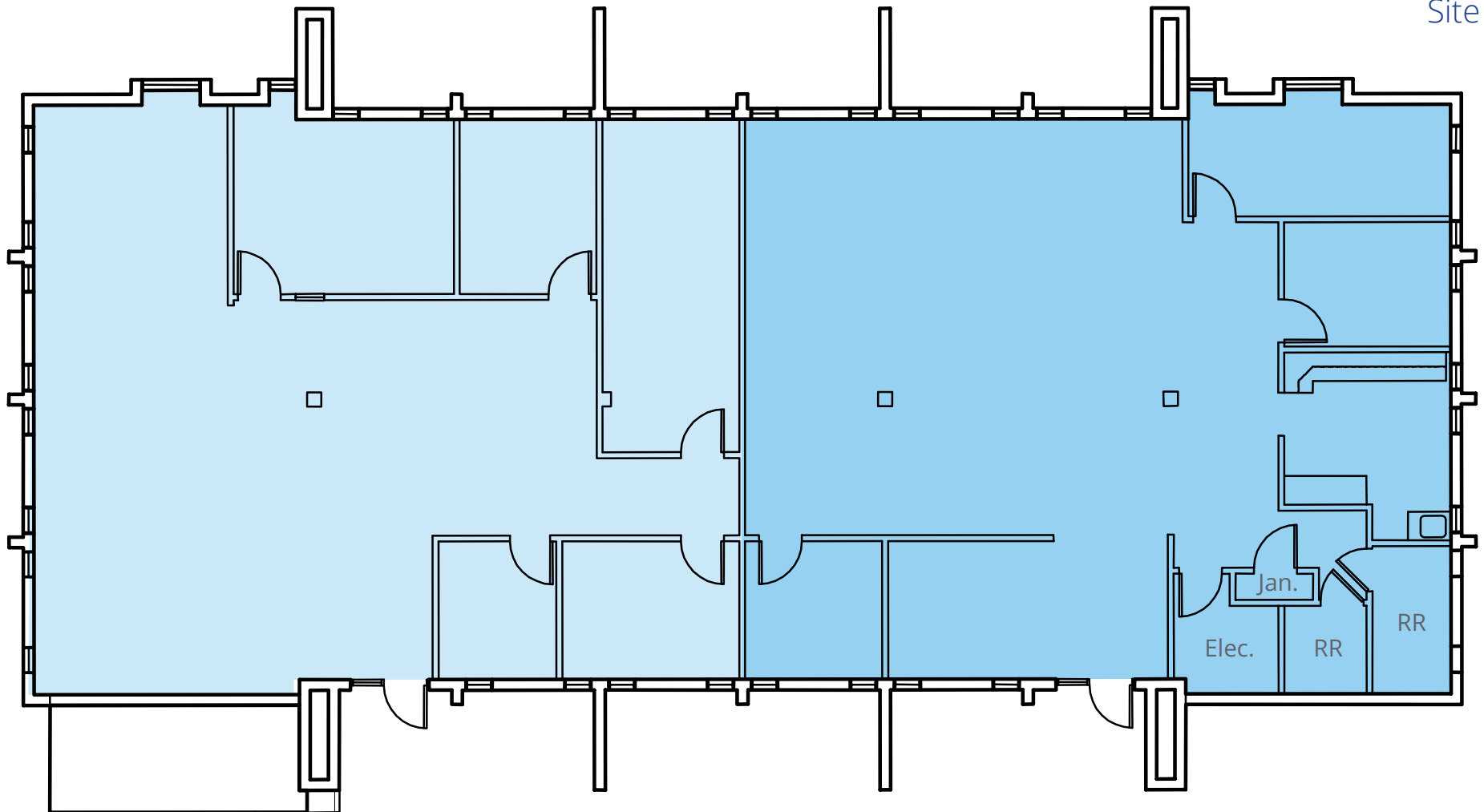


1450 Civic Court, Bldg. C | Concord, CA

First Floor | $\pm 3,976$ RSF Hypothetical Demising

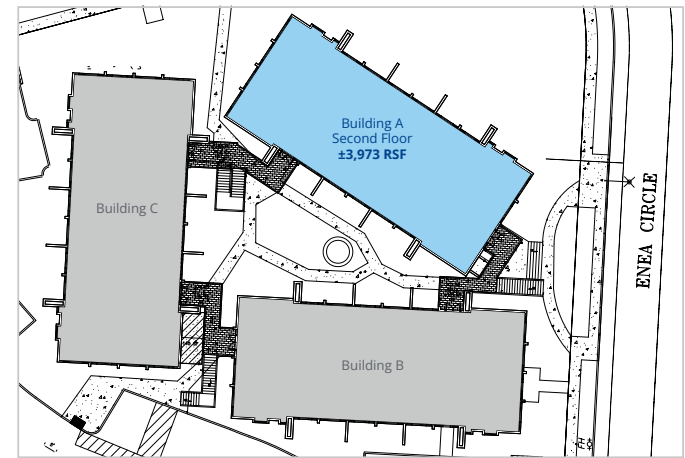


Site Plan

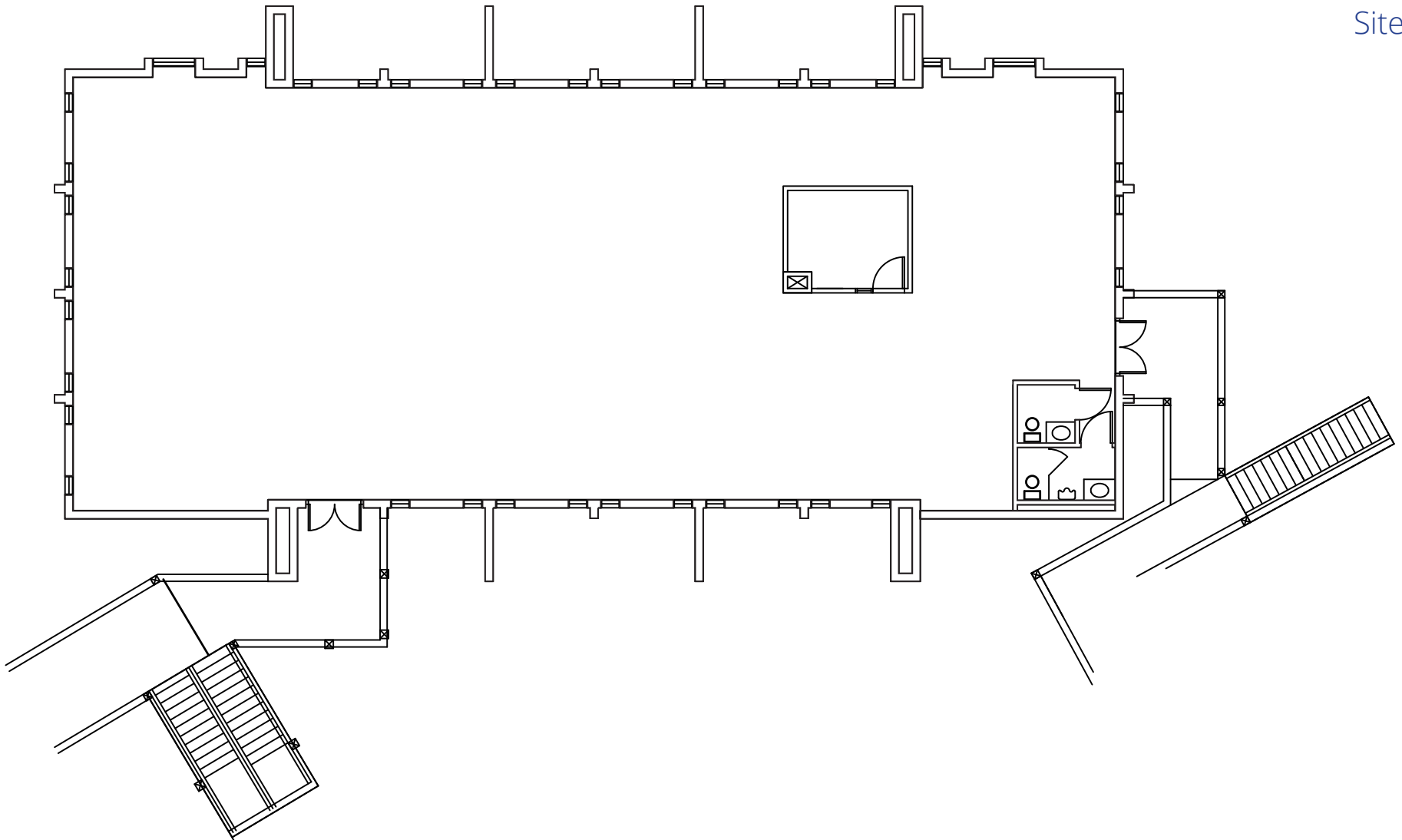


1450 Civic Court, Bldg. A | Concord, CA

Second Floor ±3,973 RSF



Site Plan



1450 Civic Court, Bldg. A

Photo Gallery

Open Office



Open Office



Open Office

