

Other Tenants On-Site



For Lease

Office Space Available

1220 Diamond Way | Concord, CA

Highlights



Walking distance from numerous retail amenities



Great access from I-680 & 242



Parking ratio 3/1,000



Comfortable environment



Class A improvements



Accelerating success.

Contact Brokers

Brian Clack
Senior Vice President
CA License No. 01416362
brian.clack@colliers.com
+1 925 279 4654

Eric Erickson, SIOR
Executive Vice President
CA License No. 01177336
eric.erickson@colliers.com
+1 925 279 5580

1220 Diamond Way | Concord, CA

Property Overview

Click on Shopping Centers
Below to View Full List
of Retailers »



Diablo Valley College

1220 Diamond Way
Office Space Available

Available Suites

Suite	Size
260	±1,504 SF



This document has been prepared by Colliers for advertising and general information only. Colliers makes no guarantees, representations or warranties of any kind, expressed or implied, regarding the information including, but not limited to, warranties of content, accuracy and reliability. Any interested party should undertake their own inquiries as to the accuracy of the information. Colliers excludes unequivocally all inferred or implied terms, conditions and warranties arising out of this document and excludes all liability for loss and damages arising there from. This publication is the copyrighted property of Colliers and /or its licensor(s). © 2025. All rights reserved. This communication is not intended to cause or induce breach of an existing listing agreement.

1220 Diamond Way | Concord, CA

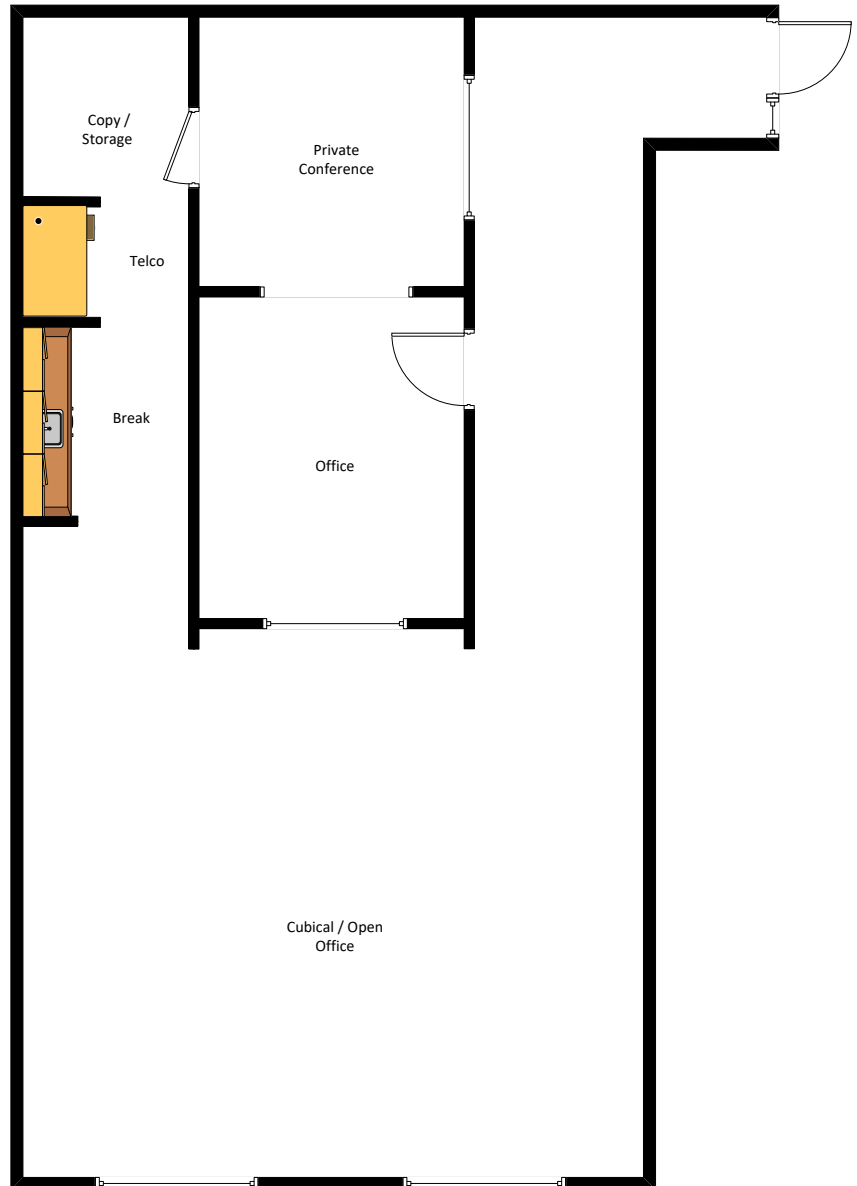
Floor Plan

Suite 260 | ±1,504 SF

- Conference room
- Open office area
- One private office
- Kitchen/break area
- Copy/storage area

Building Amenities

- Common area with ADA restrooms
- Elevators
- Access controlled
- Comcast, AT&T Fiber, Wave Fiber



Key Plan | Second Floor



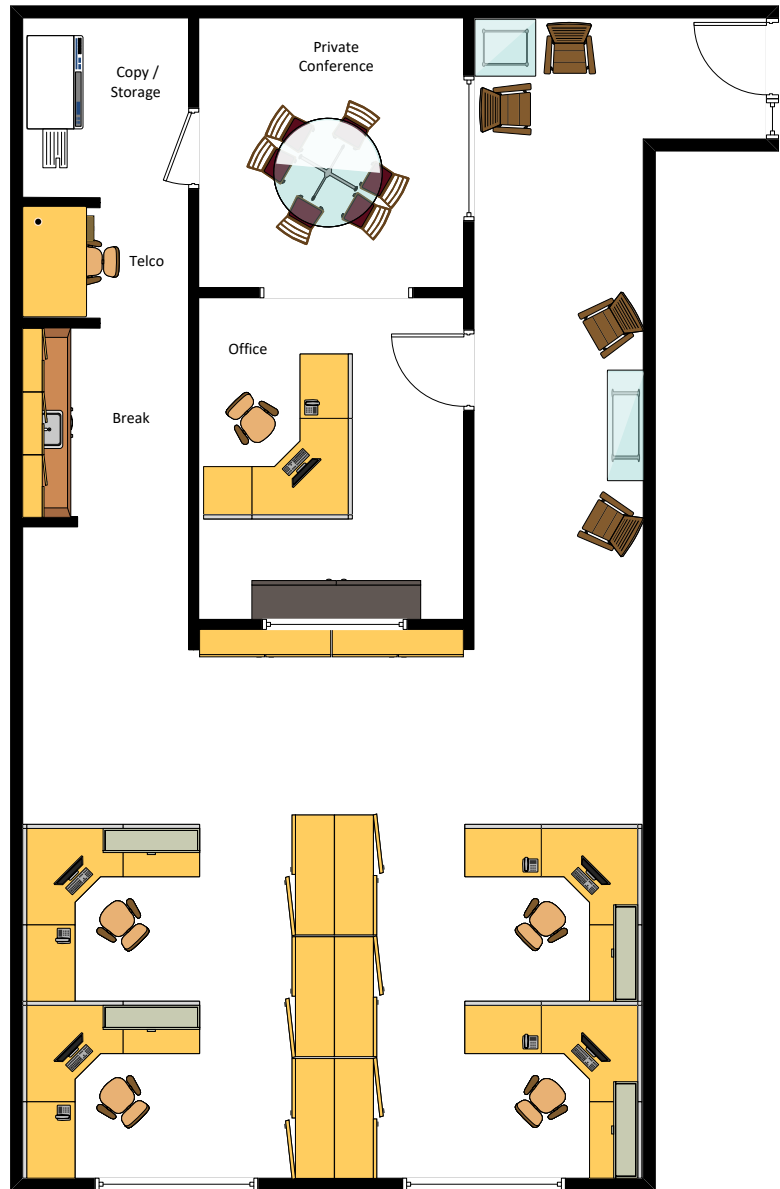
Hypothetical Furniture

Suite 260 | ±1,504 SF

- Conference room
- Open office area
- One private office
- Kitchen/break area
- Copy/storage area

Building Amenities

- Common area with ADA restrooms
- Elevators
- Access controlled
- Comcast, AT&T Fiber, Wave Fiber



Key Plan | Second Floor

