

# GATEWAY CENTRE

1850  
MOUNT DIABLO



*The Center of Walnut Creek*

[GatewayCentreWC.com](http://GatewayCentreWC.com)

# GATEWAY CENTRE



**Gateway Centre** is located at the western gateway to downtown Walnut Creek. This Class A six-story office building benefits from immediate access to I-680 and Hwy 24. Walnut Creek's downtown retail & financial district is immediately adjacent to the building. This highly visible corporate environment is one of the most desirable business locations in Contra Costa County.

[GatewayCentreWC.com](http://GatewayCentreWC.com)

±109,323 TOTAL SF

*User Friendly 6-Story  
Office Building in the  
Heart of Downtown  
Walnut Creek*

Walking distance to BART

---

Convenient downtown location

---

Abundant street parking

---

User-friendly access

---

Three levels covered on-site parking

---

On-site property management





---

Over 100 different restaurants  
within walking distance





# Expand Your Possibilities at Gateway Centre

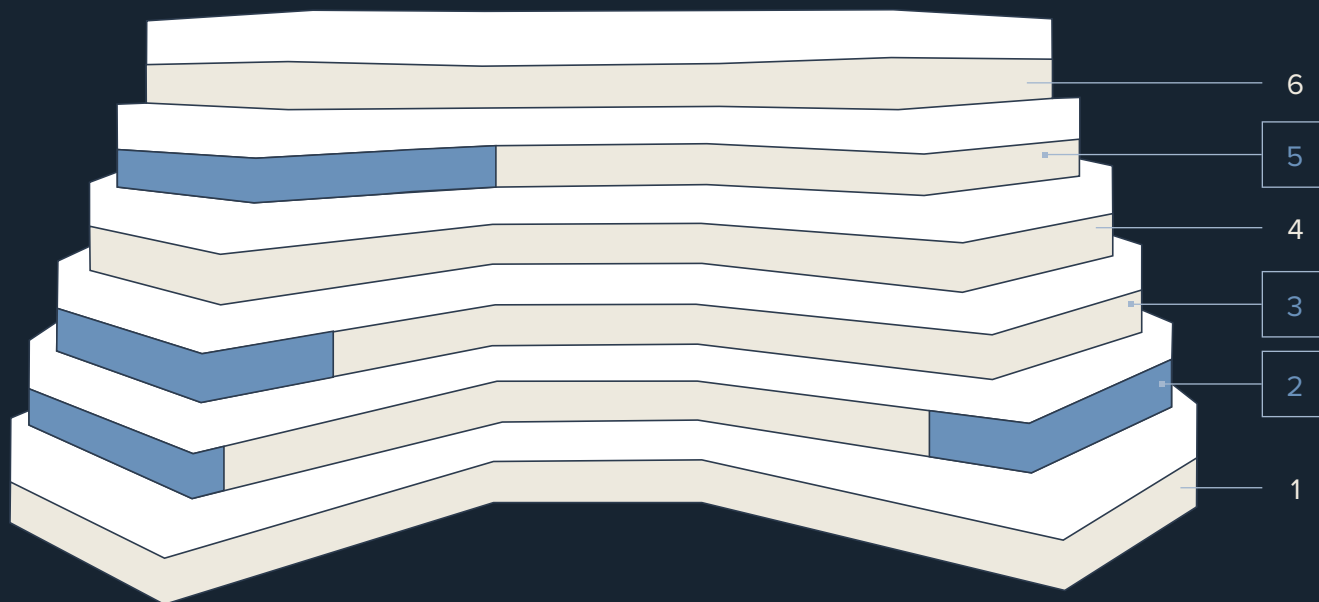
## AVAILABLE SUITES

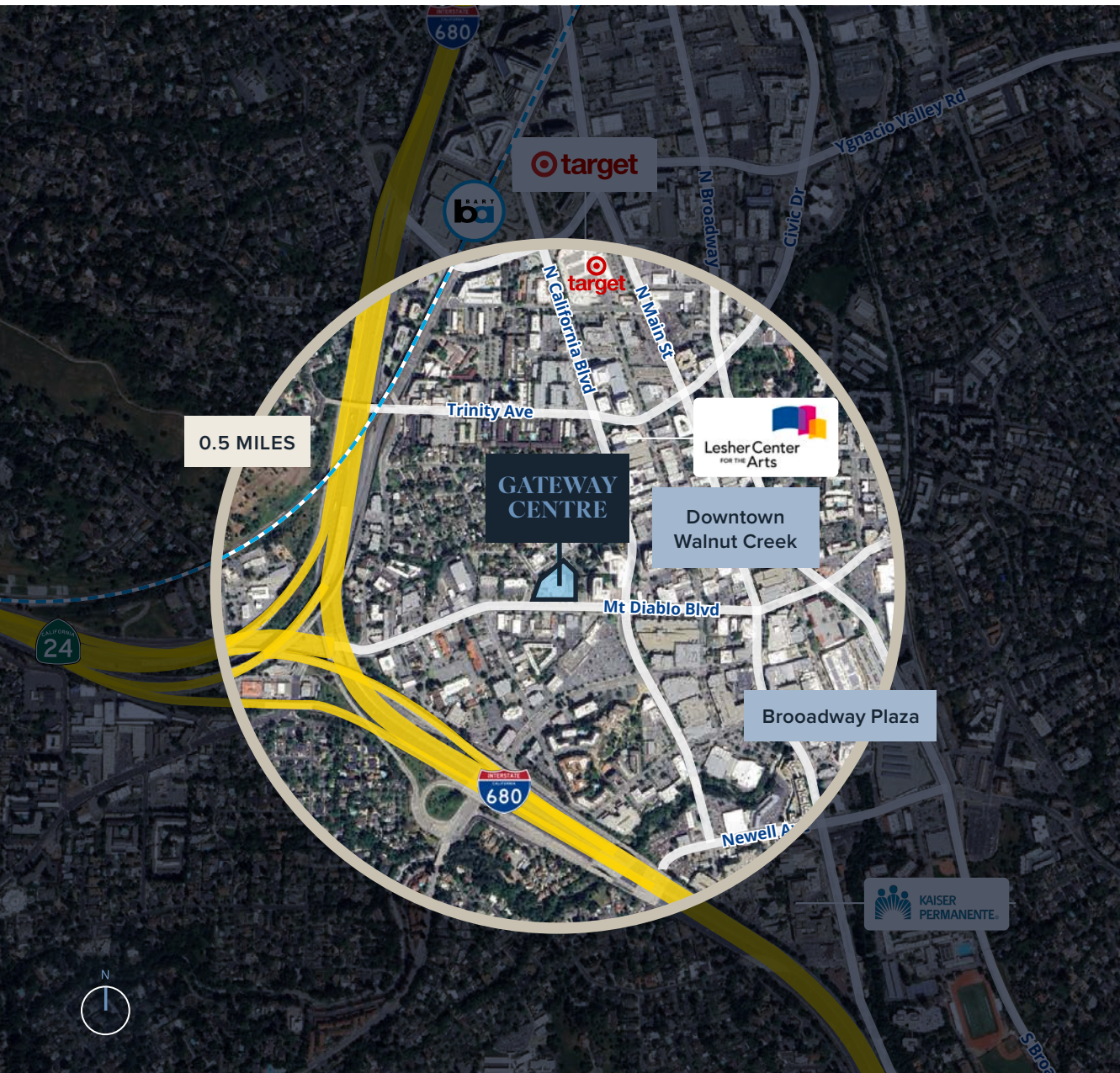
SUITE	RENTABLE SF	 VIRTUAL TOUR
220	±3,503 RSF	<a href="#">Click here to view</a> 
250	±2,408 RSF	<a href="#">Click here to view</a> 
340	±3,719 RSF	<a href="#">Click here to view</a> 
540	±4,665 RSF	<a href="#">Click here to view</a> 

### KEY

-  Available\*
-  Leased\*

\*Suite location shown is for general reference only. Please contact the broker to schedule a tour of the actual space.





NEIGHBORHOOD AMENITIES

# All at Your Doorstep



**EASY**  
Walk to Downtown  
WC BART



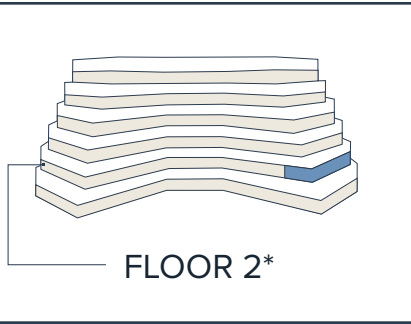
**IMMEDIATE**  
Access to I-680  
& Hwy 24

Downtown Walnut Creek



Broadway Plaza

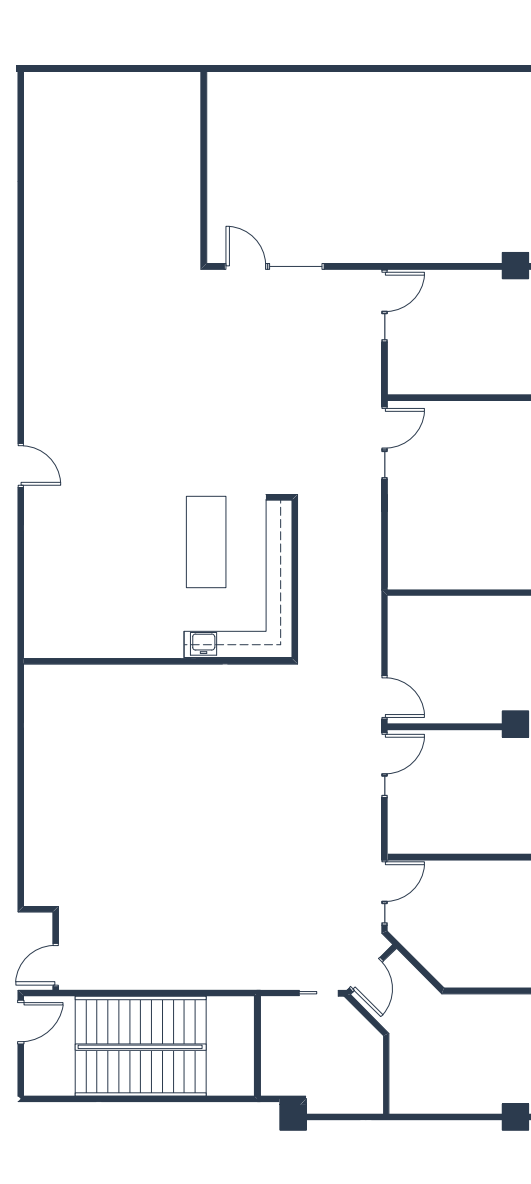




Click Here to View Virtual Tour

*+3,503 RSF*

SUITE 220



1850 Mount Diablo  
Walnut Creek, CA

\*Suite location shown is for general reference only. Please contact the broker to schedule a tour of the actual space.

**SCOTTELLIS**

Executive Managing Director  
CA License No. 00713974  
scott.ellis@colliers.com  
Dir. +1 925 279 5575

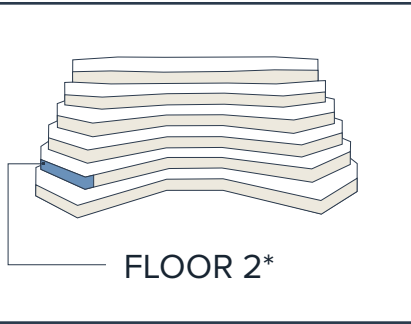
**MATTHURD**

Senior Vice President  
CA License No. 01347571  
matt.hurd@colliers.com  
Dir. +1 925 279 5567

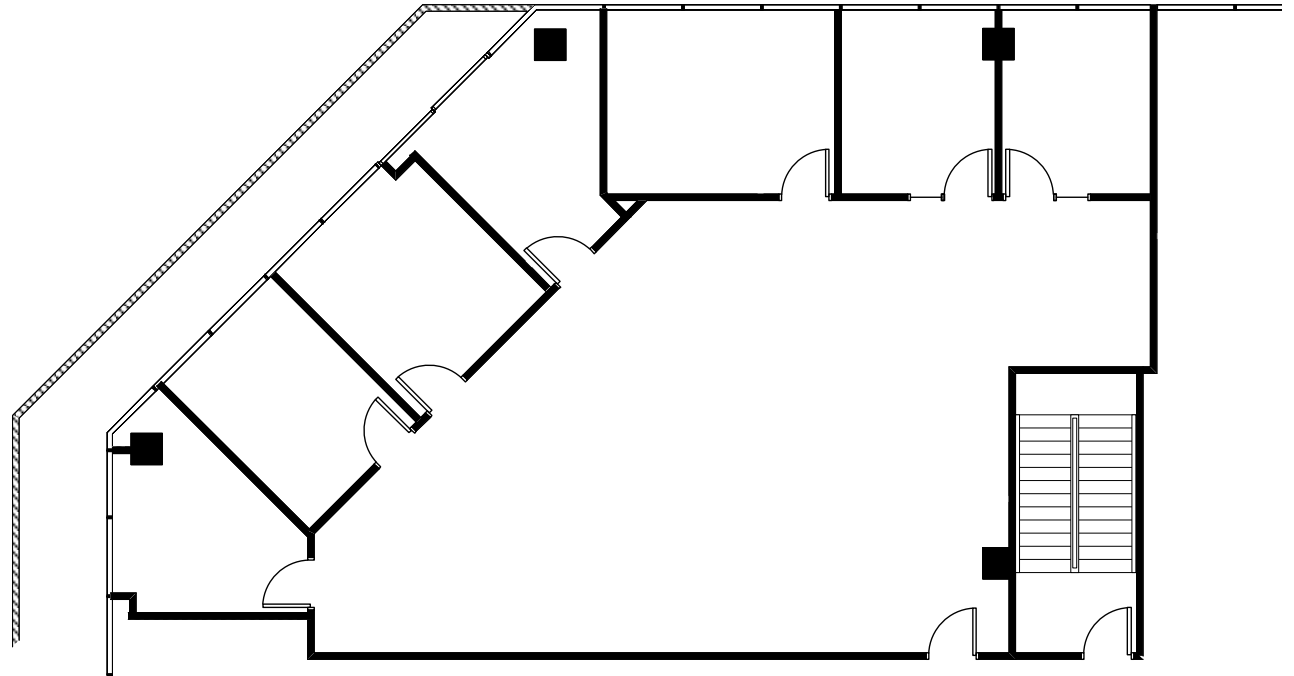
**ERIC ERICKSON, SIOR**

Executive Vice President  
CA License No. 01177336  
eric.erickson@colliers.com  
Dir. +1 925 279 5580





1850 Mount Diablo  
Walnut Creek, CA



[Click Here to View Virtual Tour](#)

*+2,408 RSF*

SUITE 250

\*Suite location shown is for general reference only. Please contact the broker to schedule a tour of the actual space.

**SCOTTELLIS**

Executive Managing Director  
CA License No. 00713974  
scott.ellis@colliers.com  
Dir. +1 925 279 5575

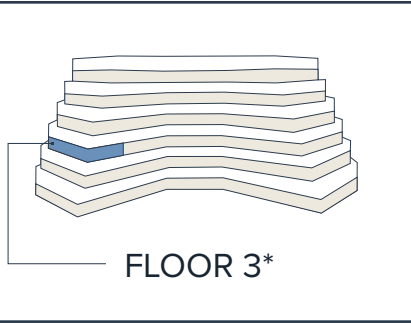
**MATTHURD**

Senior Vice President  
CA License No. 01347571  
matt.hurd@colliers.com  
Dir. +1 925 279 5567

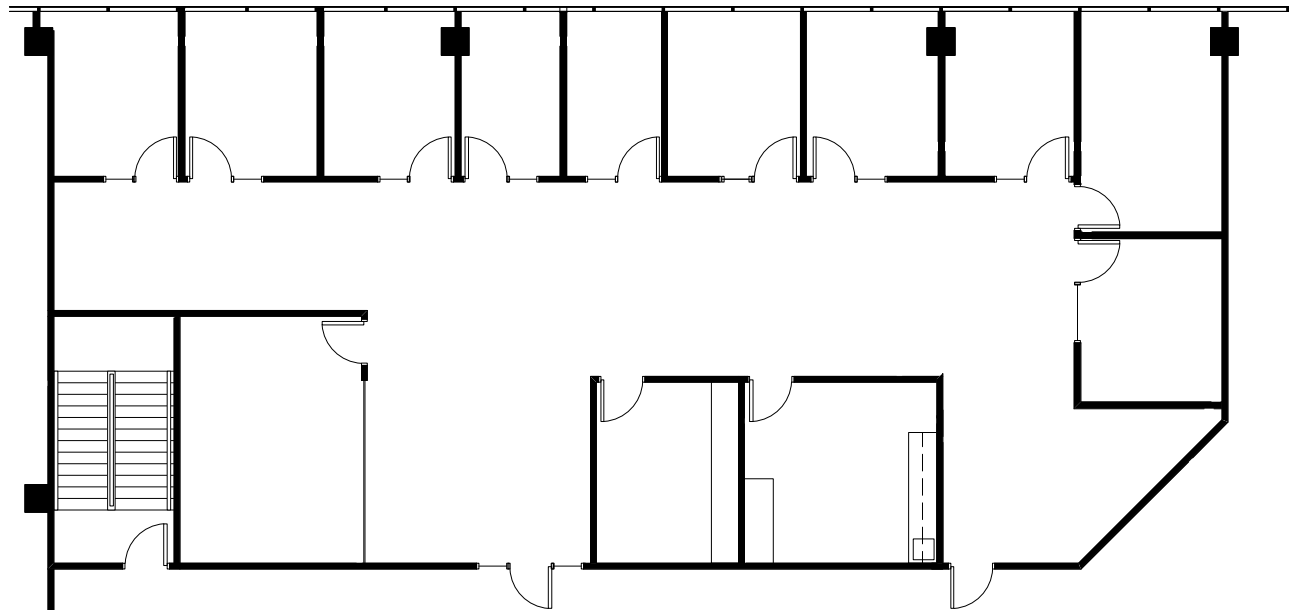
**ERIC ERICKSON, SIOR**

Executive Vice President  
CA License No. 01177336  
eric.erickson@colliers.com  
Dir. +1 925 279 5580





1850 Mount Diablo  
Walnut Creek, CA



[Click Here to View Virtual Tour](#)

*±3,719 RSF*

SUITE 340

\*Suite location shown is for general reference only. Please contact the broker to schedule a tour of the actual space.

**SCOTTELLIS**

Executive Managing Director  
CA License No. 00713974  
scott.ellis@colliers.com  
Dir. +1 925 279 5575

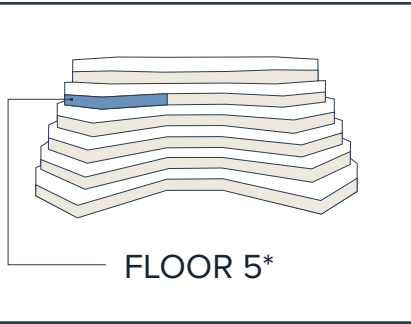
**MATTHURD**

Senior Vice President  
CA License No. 01347571  
matt.hurd@colliers.com  
Dir. +1 925 279 5567

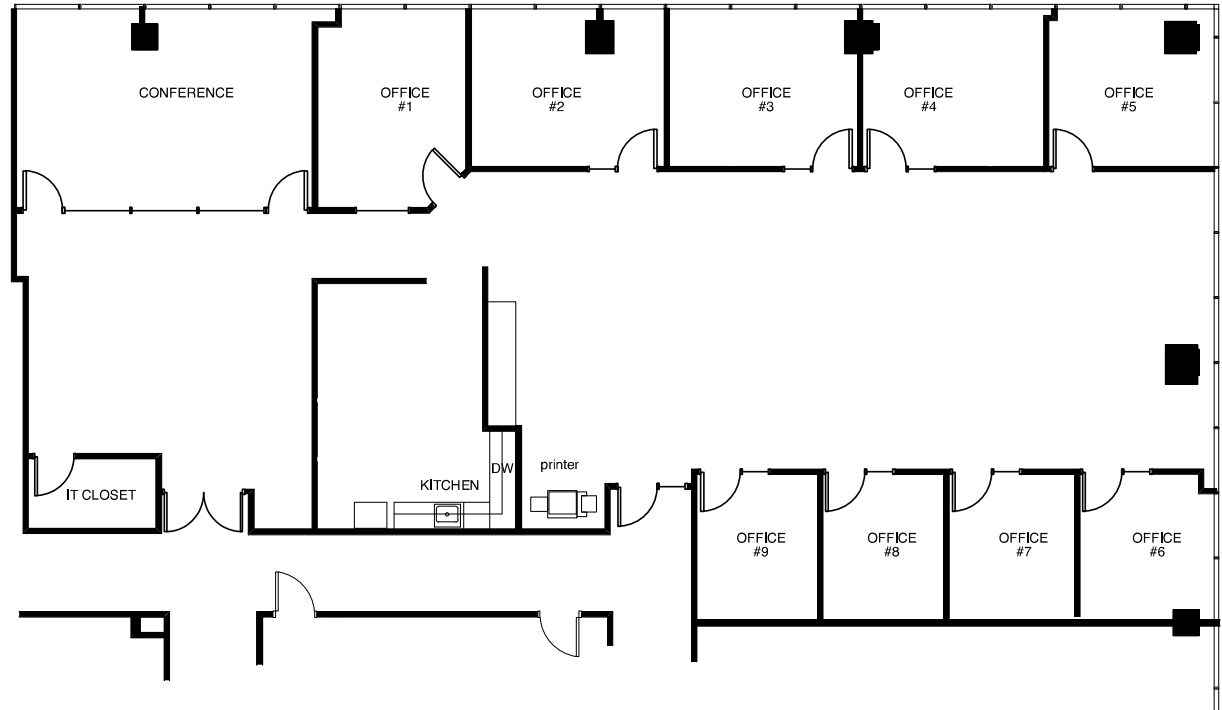
**ERIC ERICKSON, SIOR**

Executive Vice President  
CA License No. 01177336  
eric.erickson@colliers.com  
Dir. +1 925 279 5580





1850 Mount Diablo  
Walnut Creek, CA



[Click Here to View Virtual Tour](#) 

*±4,665 RSF*

SUITE 540

\*Suite location shown is for general reference only. Please contact the broker to schedule a tour of the actual space.

**SCOTTELLIS**

Executive Managing Director  
CA License No. 00713974  
scott.ellis@colliers.com  
Dir. +1 925 279 5575

**MATTHURD**

Senior Vice President  
CA License No. 01347571  
matt.hurd@colliers.com  
Dir. +1 925 279 5567

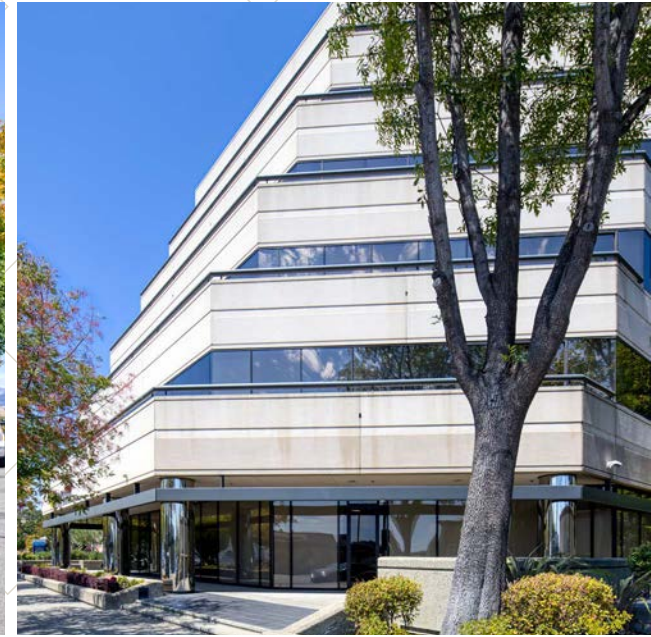
**ERIC ERICKSON, SIOR**

Executive Vice President  
CA License No. 01177336  
eric.erickson@colliers.com  
Dir. +1 925 279 5580



# GATEWAY CENTRE

1850 Mount Diablo Walnut Creek, CA



*Class A Office | For Lease*

GET IN  
TOUCH

---

**SCOTT ELLIS**

Executive Managing Director  
CA License No. 00713974  
scott.ellis@colliers.com  
Dir. +1 925 279 5575

**MATT HURD**

Senior Vice President  
CA License No. 01347571  
matt.hurd@colliers.com  
Dir. +1 925 279 5567

**ERIC ERICKSON, SIOR**

Executive Vice President  
CA License No. 01177336  
eric.erickson@colliers.com  
Dir. +1 925 279 5580



This document has been prepared by Colliers for advertising and general information only. Colliers makes no guarantees, representations or warranties of any kind, expressed or implied, regarding the information including, but not limited to, warranties of content, accuracy and reliability. Any interested party should undertake their own inquiries as to the accuracy of the information. Colliers excludes unequivocally all inferred or implied terms, conditions and warranties arising out of this document and excludes all liability for loss and damages arising there from. This publication is the copyrighted property of Colliers and /or its licensor(s). © 2026. All rights reserved. This communication is not intended to cause or induce breach of an existing listing agreement.